

Material: EPDM, FKM (SILICONE)
 Size: DN10 - DN100
 Screen Material: 316SS
 Meets: FDA 177.2600, USP CLASS VI,
 CYTOTOXICITY TESTING, DIN11864
 Animal derived ingredient free
 Mesh sizes: 20, 40, 60, 80, 100

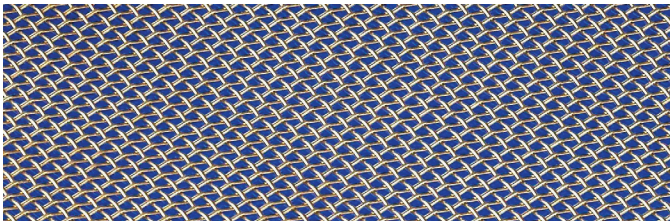
This are the first DIN11864 screens. These will fit the 11864-1, 11864-2 and 11864-3 execution. This relatively new hygienic connection is gaining popularity in Europe. The use of screens in the pharmaceutical market with Tri-Clover based gaskets is significant. The DIN11864 screens will be first available in EPDM, FKM and possibly Platinum Silicone in a later stage.

The mesh sizes will be 20,40,60,80,100 and 150. All of the elastomers are in accordance with FDA and USP guidelines, Animal Derived Ingredient Free. The lobe pump is popular pump in the industry, but can easily be damaged in a start-up phase. Small parts dropped in the system can destroy a pump in no time. Time to use one of these screens (filters).



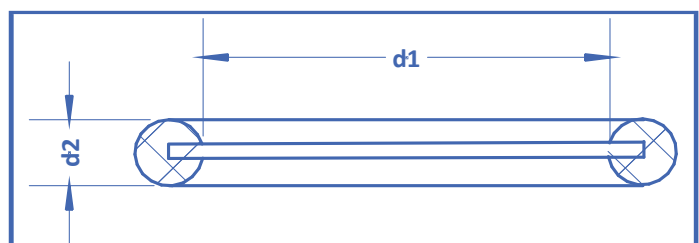
Sanitary Pumps

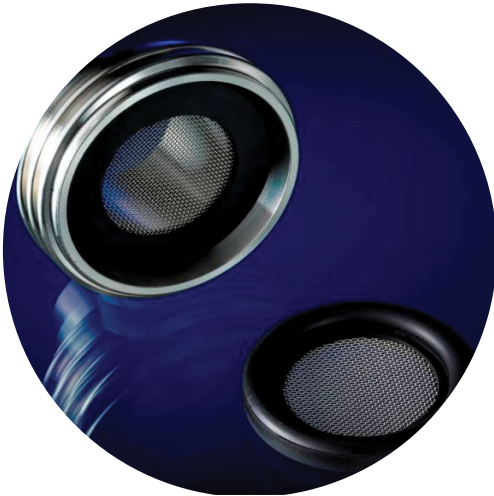
Applications:
 Pump protection
 Inline fluid conditioning



DIN 11850 NW	d1	d2
10	12	3.5
15	18	3.5
20	22	3.5
25	28	3.5
32	33	5.0
40	39	5.0
50	51	5.0
65	67	5.0
80	83	5.0
100	101	5.0

Mesh (wrap)	Wire ϕ (mm)	Opening (mm)	Open Area (%)	Material
6	0.900	3.333	62	AISI 316
8	0.700	2.475	61	AISI 316
10	0.600	1.940	58	AISI 316
20	0.340	0.930	54	AISI 316
40	0.220	0.415	43	AISI 316
60	0.190	0.233	30	AISI 316
80	0.170	0.148	22	AISI 316
100	0.112	0.142	31	AISI 316



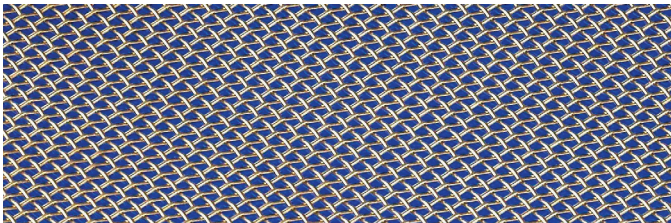


Material: EPDM, FKM
Size: DN10 - DN100
Screen Material: 316SS
Meets: FDA 177.2600, DIN11864
 Animal derived ingredient free
Mesh sizes: 6,8,10,20,40,60

Applications:
 Inline fluid conditioning
 Outdoor loading dock connections,
 to prevent bugs to walk in.
 Protection during start-up testing phase with
 new systems.
 Pump protection

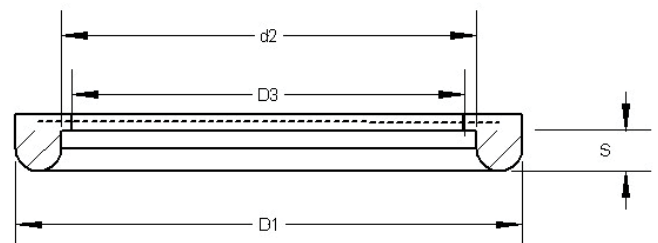
We are pleased to introduce the first DIN11851 screens. This well known fitting for the food and dairy industries in Europe has proven its value over the years. It is called Milkthreadfitting. The use of screens in the pharmaceutical market with Tri-Clover based gaskets is significant.

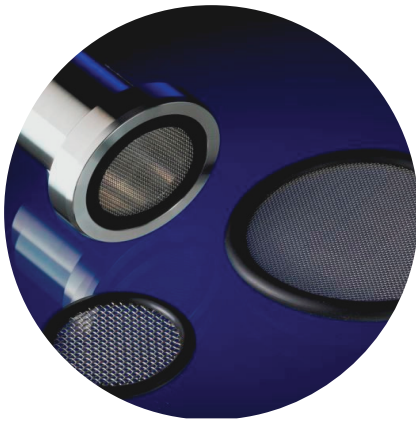
The DIN11851 screens will be available in EPDM, FKM and possibly BUNA. In most cases the fluids in the food industry are viscous and therefore high mesh screens are not practical. All of the elastomers are in accordance with FDA regulations.



DIN 11850 NW	d1	d2	d3	S
10	20	12	10.5	4.5
15	26	18	16.5	4.5
20	33	23	20.5	4.5
25	40	30	26.5	5.0
32	46	36	32.5	5.0
40	52	42	38.5	5.0
50	64	54	50.5	5.0
65	81	71	66.5	5.0
80	95	85	81.5	5.0
100	114	94	100.5	6.0

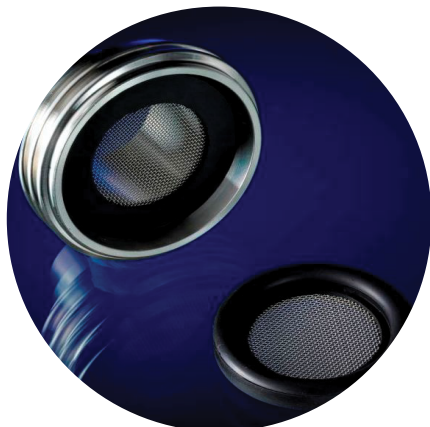
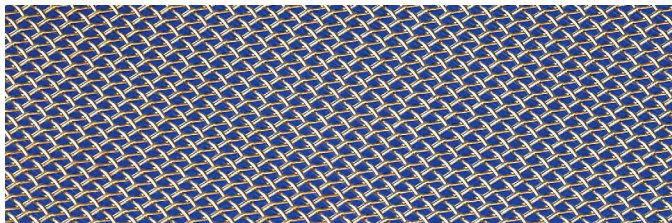
Mesh (wrap)	Wire ϕ (mm)	Opening (mm)	Open Area (%)	Material
6	0.900	3.333	62	AISI 316
8	0.700	2.475	61	AISI 316
10	0.600	1.940	58	AISI 316
20	0.340	0.930	54	AISI 316
40	0.220	0.415	43	AISI 316
60	0.190	0.233	30	AISI 316
80	0.170	0.148	22	AISI 316
100	0.112	0.142	31	AISI 316





This are the first DIN11864 screens. These will fit the 11864-1, 11864-2 and 11864-3 execution. This relatively new hygienic connection is gaining popularity in Europe. The use of screens in the pharmaceutical market with Tri-Clover based gaskets is significant. The DIN11864 screens will be first available in EPDM, FKM and possibly Platinum Silicone in a later stage.

The mesh sizes will be 20,40,60,80,100 and 150. All of the elastomers are in accordance with FDA and USP guidelines, Animal Derived Ingredient Free. The lobe pump is popular pump in the industry, but can easily be damaged in a start-up phase. Small parts dropped in the system can destroy a pump in no time. Time to use one of these screens (filters).



We are pleased to introduce the first DIN11851 screens. This well known fitting for the food and dairy industries in Europe has proven its value over the years. It is called Milkthreadfitting. The use of screens in the pharmaceutical market with Tri-Clover based gaskets is significant.

The DIN11851 screens will be available in EPDM, FKM and possibly BUNA. In most cases the fluids in the food industry are viscous and therefore high mesh screens are not practical. All of the elastomers are in accordance with FDA regulations.

Material: EPDM, FKM (SILICONE)

Size: DN10 - DN100

Screen Material: 316SS

Meets: FDA 177.2600, USP CLASS VI, CYTOTOXICITY TESTING, DIN11864

Animal derived ingredient free

Mesh sizes: 20, 40, 60, 80, 100



Sanitary Pumps

Applications:

Pump protection

Inline fluid conditioning

Material: EPDM, FKM

Size: DN10 - DN100

Screen Material: 316SS

Meets: FDA 177.2600, DIN11864

Animal derived ingredient free

Mesh sizes: 6,8,10,20,40,60

Applications:

Inline fluid conditioning

Outdoor loading dock connections, to prevent bugs to walk in.

Protection during start-up testing phase with new systems.

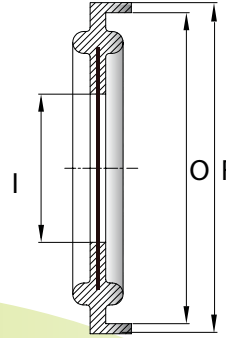
Pump protection

SCREENS

Tri-Clamp DIN 32676 Screen Gaskets



Nominal Size DN	I	O	F	Ordering Code
10	10.2	34.0	36.2	10-TCDS/*M.L.**
15	16.2	34.0	36.2	15-TCDS/*M.L.**
20	20.2	34.0	36.2	20-TCDS/*M.L.**
25	26.2	50.5	52.7	25-TCDS/*M.L.**
32	32.2	50.5	52.7	32-TCDS/*M.L.**
40	38.2	50.5	52.7	40-TCDS/*M.L.**
50	50.2	64.0	66.2	50-TCDS/*M.L.**
65	66.2	91.0	93.2	65-TCDS/*M.L.**
80	81.2	106.0	108.2	80-TCDS/*M.L.**
100	100.2	119.0	121.2	100-TCDS/*M.L.**
125	125.2	155.0	157.2	125-TCDS/*M.L.**
150	150.2	183.0	185.2	150-TCDS/*M.L.**
200	200.2	233.5	235.7	200-TCDS/*M.L.**



* The first digit referse to material guide, according to Table 1
 ** The last digit referse to surface quality, according to Table 2

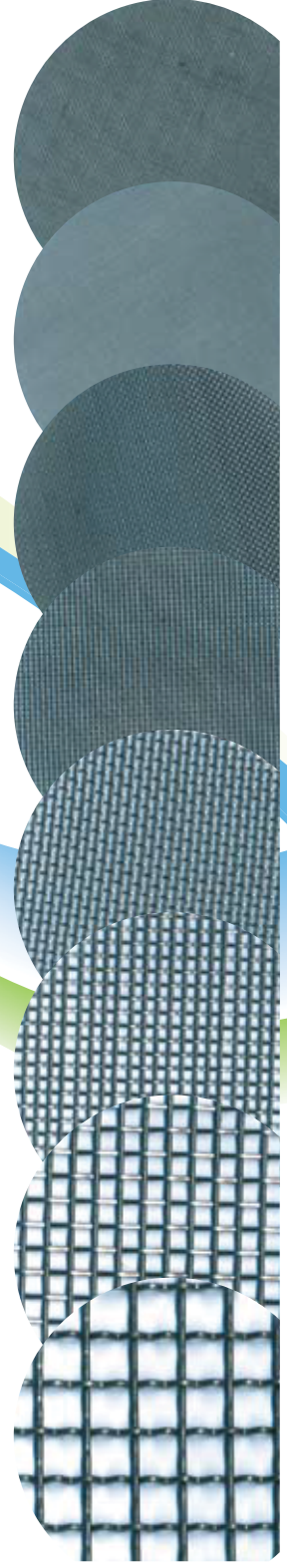
Table1

Mesh (wrap)	Wire ϕ (mm)	Opening (mm)	Open Area (%)	Material
6	0.900	3.333	62	AISI 316
8	0.700	2.475	61	AISI 316
10	0.600	1.940	58	AISI 316
20	0.340	0.930	54	AISI 316
40	0.220	0.415	43	AISI 316
60	0.190	0.233	30	AISI 316
80	0.170	0.148	22	AISI 316
100	0.112	0.142	31	AISI 316

Table2

Material	FDA Certified	FDA Class VI Certified
Buna-N	BW	
EPDM Black	EP	EP.RX
EPDM White	EPW	EPW.RX
Silicone Platinum		SX.RX
Silicone Peroxide	SP	SP.RX
Viton Black	V	V.RX
Viton White	VW	VW.RX

60
50
40
20
14
10
8
4



Ordering Example

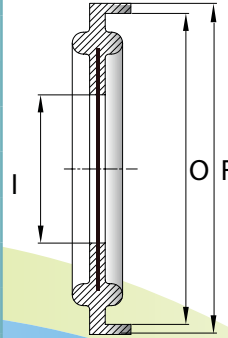
Description	Nominal Size	Mesh Size	Material	Ordering Code
Type TCD/S	10	#10	EPDM FDA	10-TCD/S10M.L.EP

SCREENS

Tri-Clamp DIN 32676 Removable Screens



Nominal Size DN	I	O	F	Ordering Code
10	10.2	34.0	36.2	10-TCDS/R*M.L.**
15	16.2	34.0	36.2	15-TCDS/R*M.L.**
20	20.2	34.0	36.2	20-TCDS/R*M.L.**
25	26.2	50.5	52.7	25-TCDS/R*M.L.**
32	32.2	50.5	52.7	32-TCDS/R*M.L.**
40	38.2	50.5	52.7	40-TCDS/R*M.L.**
50	50.2	64.0	66.2	50-TCDS/R*M.L.**
65	66.2	91.0	93.2	65-TCDS/R*M.L.**
80	81.2	106.0	108.2	80-TCDS/R*M.L.**
100	100.2	119.0	121.2	100-TCDS/R*M.L.**
125	125.2	155.0	157.2	125-TCDS/R*M.L.**
150	150.2	183.0	185.2	150-TCDS/R*M.L.**
200	200.2	233.5	235.7	200-TCDS/R*M.L.**



60

50

40

20

14

10

8

4

* The first digit refers to material guide, according to Table 1
 ** The last digit refers to surface quality, according to Table 2

Table1

Mesh (wrap)	Wire ϕ (mm)	Opening (mm)	Open Area (%)	Material
6	0.900	3.333	62	AISI 316
8	0.700	2.475	61	AISI 316
10	0.600	1.940	58	AISI 316
20	0.340	0.930	54	AISI 316
40	0.220	0.415	43	AISI 316
60	0.190	0.233	30	AISI 316
80	0.170	0.148	22	AISI 316
100	0.112	0.142	31	AISI 316

Table2

Material	FDA Certified	FDA Class VI Certified
Buna-N	BW	
EPDM Black	EP	EP.RX
EPDM White	EPW	EPW.RX
Silicone Platinum		SX.RX
Silicone Peroxide	SP	SP.RX
Viton Black	V	V.RX
Viton White	VW	VW.RX

DIN

Ordering Example

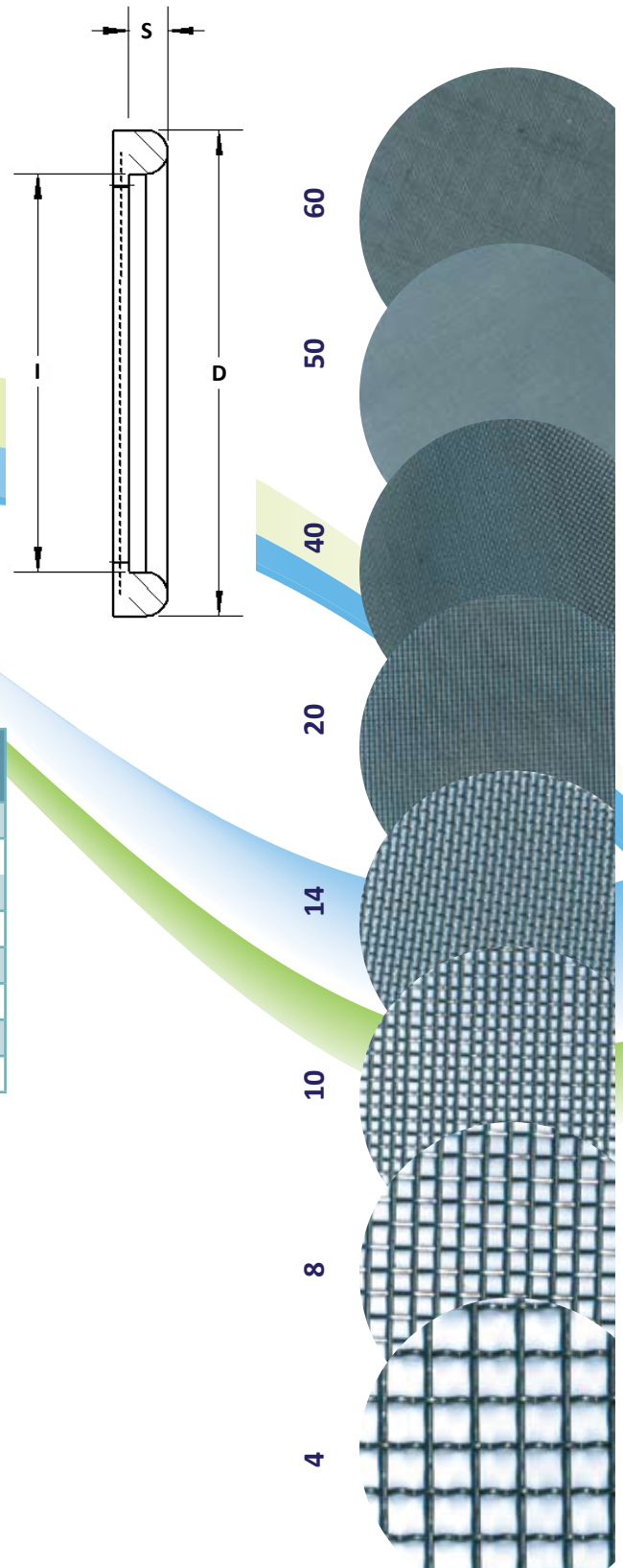
Description	Nominal Size	Mesh Size	Material	Ordering Code
Type TCD/S	10	#10	EPDM FDA	10-TCD/S10M.L.EP

SCREENS

DIN 11851 Screen Gasket



Nominal Size DN	S	I	D	Ordering Code
10	4.5	12	20	10-851S/*M.**
15	4.5	18	26	15-851S/*M.**
20	4.5	23	33	20-851S/*M.**
25	5.0	30	40	25-851S/*M.**
32	5.0	36	46	32-851S/*M.**
40	5.0	42	52	40-851S/*M.**
50	5.0	54	64	50-851S/*M.**
65	5.0	71	81	65-851S/*M.**
75	5.0	78	88	75-851S/*M.**
80	5.0	85	95	80-851S/*M.**
100	6.0	104	114	100-851S/*M.**
125	7.0	130	142	125-851S/*M.**
150	7.0	155	167	150-851S/*M.**



* The first digit referse to material guide, according to Table 1
 ** The last digit referse to surface quality, according to Table 2

Table1

Mesh (wrap)	Wire ϕ (mm)	Opening (mm)	Open Area (%)	Material
6	0.900	3.333	62	AISI 316
8	0.700	2.475	61	AISI 316
10	0.600	1.940	58	AISI 316
20	0.340	0.930	54	AISI 316
40	0.220	0.415	43	AISI 316
60	0.190	0.233	30	AISI 316
80	0.170	0.148	22	AISI 316
100	0.112	0.142	31	AISI 316

Table2

Material	FDA Certified	FDA Class VI Certified
Buna-N	BW	
EPDM Black	EP	EP.RX
EPDM White	EPW	EPW.RX
Silicone Platinum		SX.RX
Silicone Peroxide	SP	SP.RX
Viton Black	V	V.RX
Viton White	VW	VW.RX
HNBR Yellow	HBV	



Ordering Example

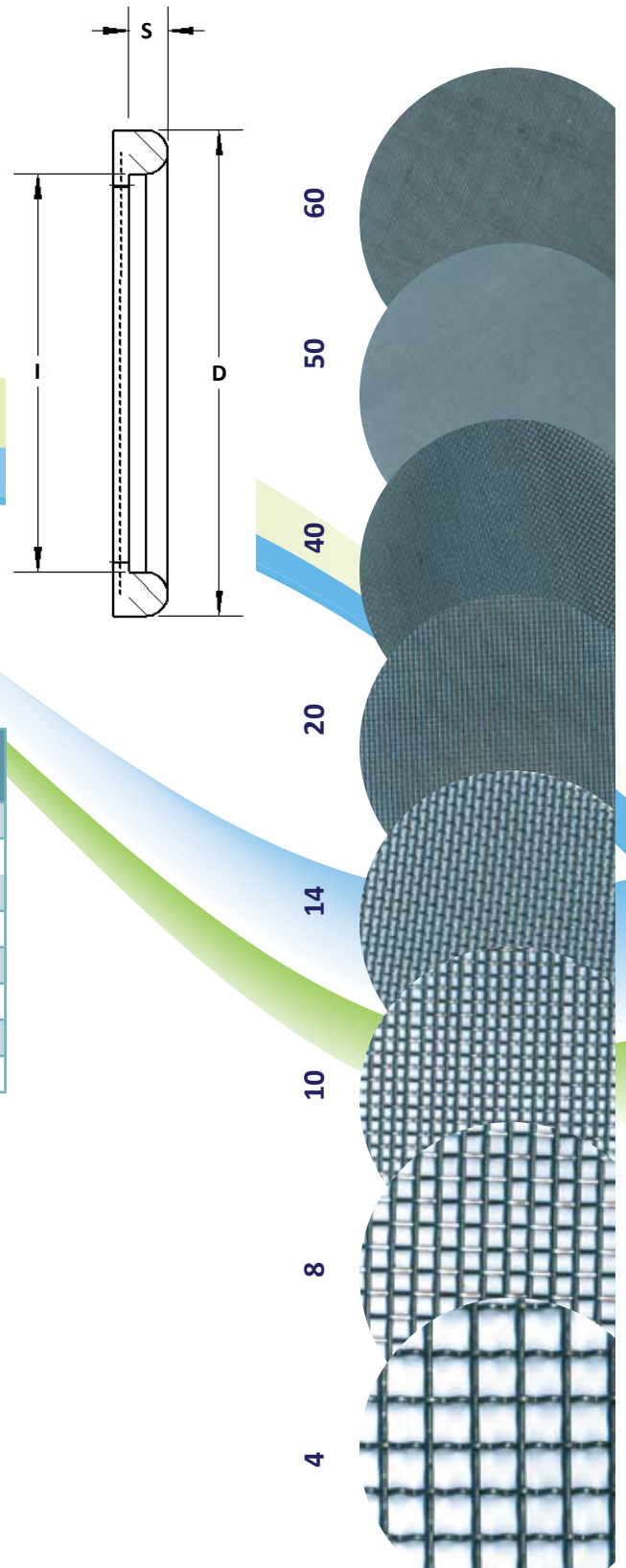
Description	Nominal Size	Mesh Size	Material	Ordering Code
Type 851/S	10	#10	EPDM FDA	10-851/S10M.EP

SCREENS

DIN 11851 Screen Removable Gasket



Nominal Size DN	S	I	D	Ordering Code
10	4.5	12	20	10-851S/R*M.**
15	4.5	18	26	15-851S/R*M.**
20	4.5	23	33	20-851S/R*M.**
25	5.0	30	40	25-851S/R*M.**
32	5.0	36	46	32-851S/R*M.**
40	5.0	42	52	40-851S/R*M.**
50	5.0	54	64	50-851S/R*M.**
65	5.0	71	81	65-851S/R*M.**
75	5.0	78	88	75-851S/R*M.**
80	5.0	85	95	80-851S/R*M.**
100	6.0	104	114	100-851S/R*M.**
125	7.0	130	142	125-851S/R*M.**
150	7.0	155	167	150-851S/R*M.**



* The first digit referse to material guide, according to Table 1
 ** The last digit referse to surface quality, according to Table 2

Table1

Mesh (wrap)	Wire ϕ (mm)	Opening (mm)	Open Area (%)	Material
6	0.900	3.333	62	AISI 316
8	0.700	2.475	61	AISI 316
10	0.600	1.940	58	AISI 316
20	0.340	0.930	54	AISI 316
40	0.220	0.415	43	AISI 316
60	0.190	0.233	30	AISI 316
80	0.170	0.148	22	AISI 316
100	0.112	0.142	31	AISI 316

Table2

Material	FDA Certified	FDA Class VI Certified
Buna-N	BW	
EPDM Black	EP	EP.RX
EPDM White	EPW	EPW.RX
Silicone Platinum		SX.RX
Silicone Peroxide	SP	SP.RX
Viton Black	V	V.RX
Viton White	VW	VW.RX
HNBR Yellow	HBV	



Ordering Example

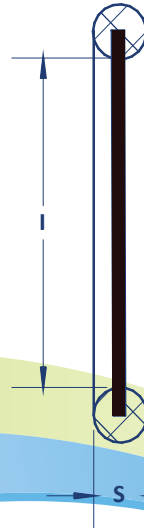
Description	Nominal Size	Mesh Size	Material	Ordering Code
Type 851/S	10	#10	EPDM FDA	10-851/S10M.EP

SCREENS

DIN 11864-1 FORM A
For tubes to DIN 11866
Series A



Nominal Size DN	I	S	Ordering Code
10	12	3.5	10-ODDS/*M.**
15	18	3.5	15-ODDS/*M.**
20	22	3.5	20-ODDS/*M.**
25	28	3.5	25-ODDS/*M.**
32	34	5.0	32-ODDS/*M.**
40	40	5.0	40-ODDS/*M.**
50	52	5.0	50-ODDS/*M.**
65	68	5.0	65-ODDS/*M.**
80	83	5.0	80-ODDS/*M.**
100	102	5.0	100-ODDS/*M.**
125	127	5.0	125-ODDS/*M.**
150	152	5.0	150-ODDS/*M.**



* The first digit referse to material guide, according to Table 1
** The last digit referse to surface quality, according to Table 2

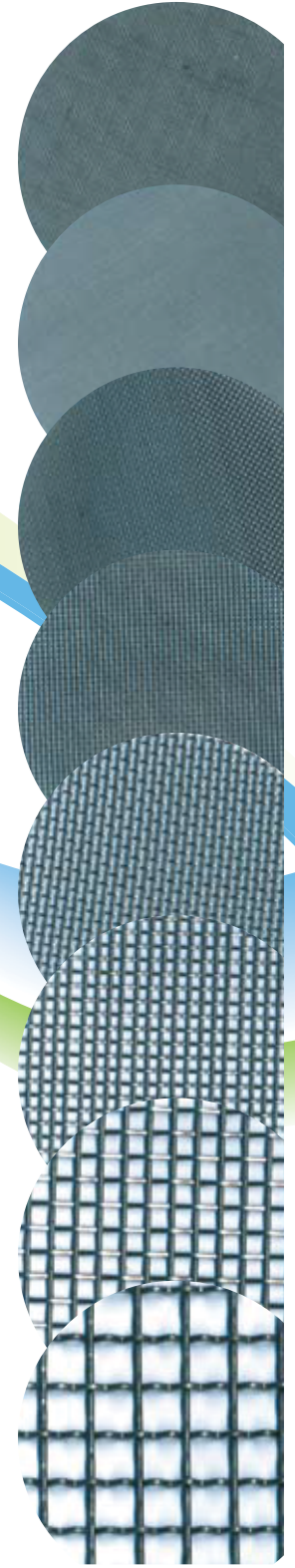
Table1

Mesh (wrap)	Wire ϕ (mm)	Opening (mm)	Open Area (%)	Material
6	0.900	3.333	62	AISI 316
8	0.700	2.475	61	AISI 316
10	0.600	1.940	58	AISI 316
20	0.340	0.930	54	AISI 316
40	0.220	0.415	43	AISI 316
60	0.190	0.233	30	AISI 316
80	0.170	0.148	22	AISI 316
100	0.112	0.142	31	AISI 316

Table2

Material	FDA Certified	FDA Class VI Certified
Buna-N	BW	
EPDM Black	EP	EP.RX
EPDM White	EPW	EPW.RX
Silicone Platinum		SX.RX
Silicone Peroxide	SP	SP.RX
Viton Black	V	V.RX
Viton White	VW	VW.RX

60
50
40
20
14
10
8
4



Ordering Example

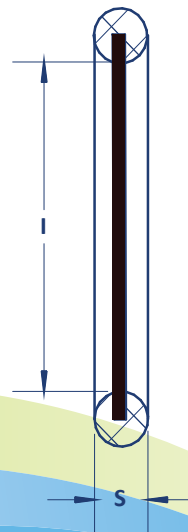
Description	Nominal Size	Mesh Size	Material	Ordering Code
Type ODD/S	10	#10	EPDM FDA	10-ODD/S10M.EP

SCREENS

DIN 11864-1 FORM A
For tubes to DIN 11866
Series B



Nominal Size DN	I	S	Ordering Code
8	12.0	3.5	8-OGDS/*M.**
10	16.0	3.5	10-OGDS/*M.**
15	20.0	3.5	15-OGDS/*M.**
20	26.0	3.5	20-OGDS/*M.**
25	32.0	5.0	25-OGDS/*M.**
32	40.5	5.0	32-OGDS/*M.**
40	46.5	5.0	40-OGDS/*M.**
50	58.5	5.0	50-OGDS/*M.**
65	73.5	5.0	65-OGDS/*M.**
80	85.5	5.0	80-OGDS/*M.**
100	111.0	5.0	100-OGDS/*M.**



* The first digit referse to material guide, according to Table 1
** The last digit referse to surface quality, according to Table 2

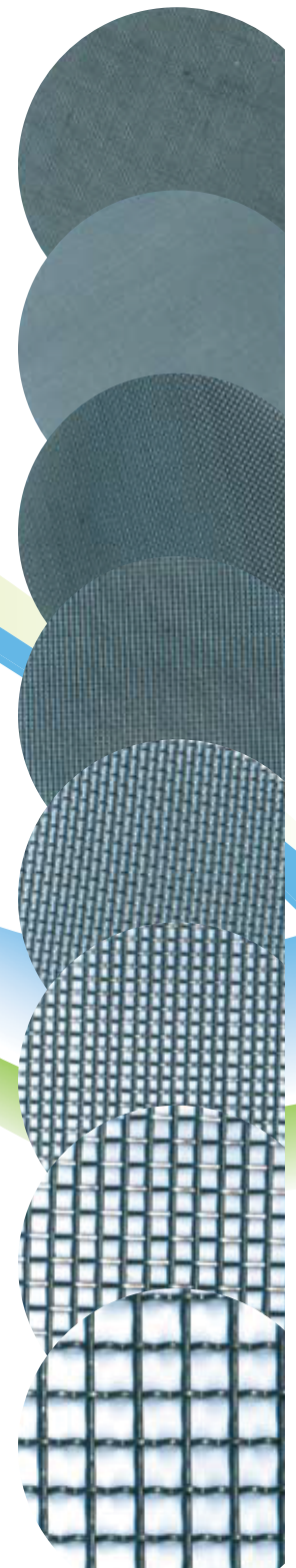
Table1

Mesh (wrap)	Wire ϕ (mm)	Opening (mm)	Open Area (%)	Material
6	0.900	3.333	62	AISI 316
8	0.700	2.475	61	AISI 316
10	0.600	1.940	58	AISI 316
20	0.340	0.930	54	AISI 316
40	0.220	0.415	43	AISI 316
60	0.190	0.233	30	AISI 316
80	0.170	0.148	22	AISI 316
100	0.112	0.142	31	AISI 316

Table2

Material	FDA Certified	FDA Class VI Certified
Buna-N	BW	
EPDM Black	EP	EP.RX
EPDM White	EPW	EPW.RX
Silicone Platinum		SX.RX
Silicone Peroxide	SP	SP.RX
Viton Black	V	V.RX
Viton White	VW	VW.RX

60
50
40
20
14
10
8
4



Ordering Example

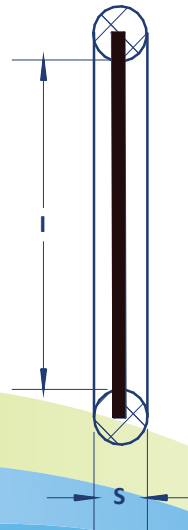
Description	Nominal Size	Mesh Size	Material	Ordering Code
Type ODG/S	10	#10	EPDM FDA	10-ODG/S10M.EP

SCREENS

DIN 11864-1 FORM A
For tubes to DIN 11866
Series C



Nominal Size DN	I	S	Ordering Code
1/2"	12	3.5	15-ODAS/*M.**
3/4"	18	3.5	20-ODAS/*M.**
1.0"	24	3.5	25-ODAS/*M.**
1½"	37	5.0	38-ODAS/*M.**
2.0"	50	5.0	51-ODAS/*M.**
2½"	62	5.0	63-ODAS/*M.**
3.0"	75	5.0	76-ODAS/*M.**
4.0"	100	5.0	100-ODAS/*M.**



* The first digit referse to material guide, according to Table 1
** The last digit referse to surface quality, according to Table 2

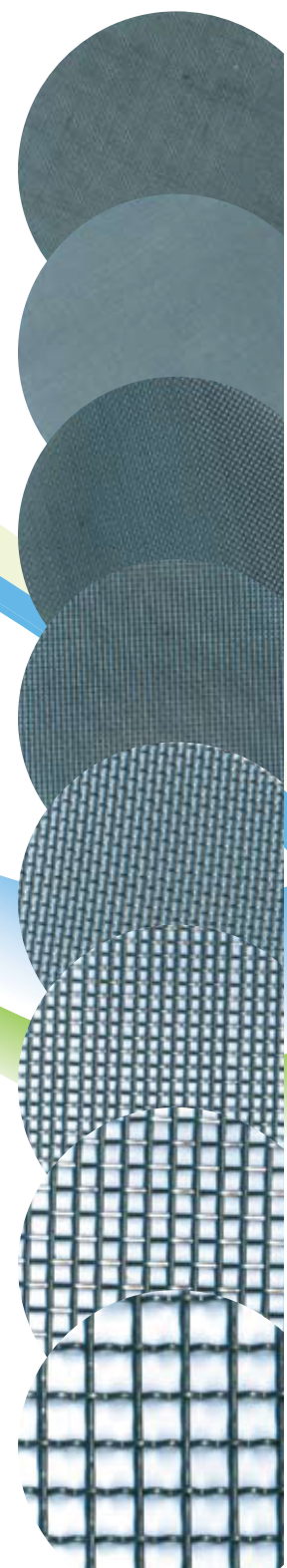
Table1

Mesh (wrap)	Wire ϕ (mm)	Opening (mm)	Open Area (%)	Material
6	0.900	3.333	62	AISI 316
8	0.700	2.475	61	AISI 316
10	0.600	1.940	58	AISI 316
20	0.340	0.930	54	AISI 316
40	0.220	0.415	43	AISI 316
60	0.190	0.233	30	AISI 316
80	0.170	0.148	22	AISI 316
100	0.112	0.142	31	AISI 316

Table2

Material	FDA Certified	FDA Class VI Certified
Buna-N	BW	
EPDM Black	EP	EP.RX
EPDM White	EPW	EPW.RX
Silicone Platinum		SX.RX
Silicone Peroxide	SP	SP.RX
Viton Black	V	V.RX
Viton White	VW	VW.RX

60
50
40
20
14
10
8
4



Ordering Example

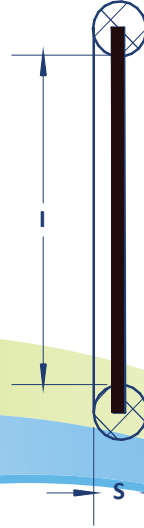
Description	Nominal Size	Mesh Size	Material	Ordering Code
Type ODA/S	10	#10	EPDM FDA	10-ODA/S10M.EP

SCREENS

DIN 11853-1 FORM A
For tubes to DIN 11866
Series A



Nominal Size DN	l	S	Ordering Code
10	12	3.5	10-ODDS/*M.**
15	18	3.5	15-ODDS/*M.**
20	22	3.5	20-ODDS/*M.**
25	28	3.5	25-ODDS/*M.**
32	34	5.0	32-ODDS/*M.**
40	40	5.0	40-ODDS/*M.**
50	52	5.0	50-ODDS/*M.**
65	68	5.0	65-ODDS/*M.**
80	83	5.0	80-ODDS/*M.**
100	102	5.0	100-ODDS/*M.**
125	127	5.0	125-ODDS/*M.**
150	152	5.0	150-ODDS/*M.**



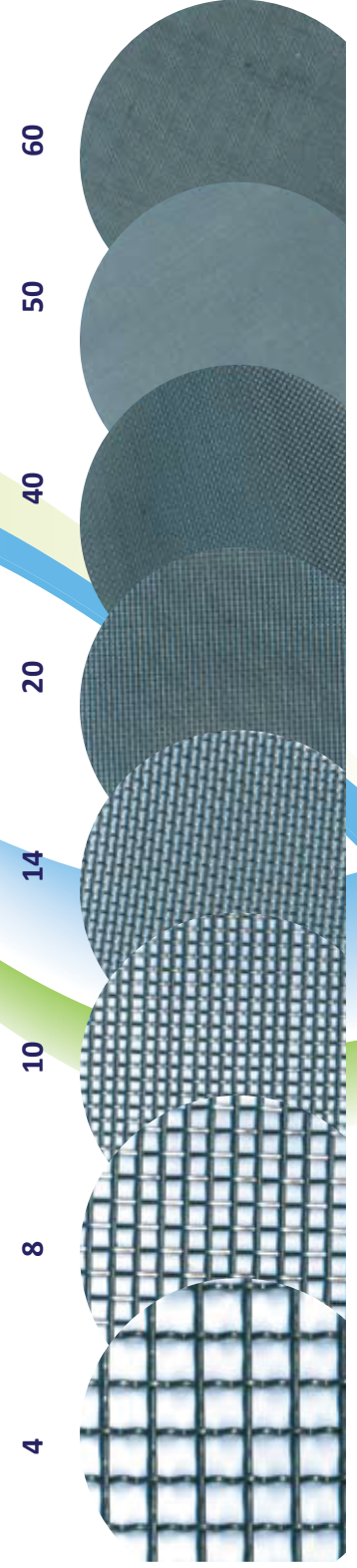
* The first digit referse to material guide, according to Table 1
 ** The last digit referse to surface quality, according to Table 2

Table1

Mesh (wrap)	Wire ϕ (mm)	Opening (mm)	Open Area (%)	Material
6	0.900	3.333	62	AISI 316
8	0.700	2.475	61	AISI 316
10	0.600	1.940	58	AISI 316
20	0.340	0.930	54	AISI 316
40	0.220	0.415	43	AISI 316
60	0.190	0.233	30	AISI 316
80	0.170	0.148	22	AISI 316
100	0.112	0.142	31	AISI 316

Table2

Material	FDA Certified	FDA Class VI Certified
Buna-N	BW	
EPDM Black	EP	EP.RX
EPDM White	EPW	EPW.RX
Silicone Platinum		SX.RX
Silicone Peroxide	SP	SP.RX
Viton Black	V	V.RX
Viton White	VW	VW.RX



Ordering Example

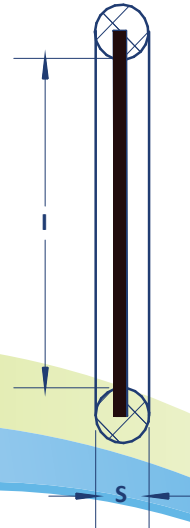
Description	Nominal Size	Mesh Size	Material	Ordering Code
Type ODD/S	10	#10	EPDM FDA	10-ODD/S10M.EP

SCREENS

DIN 11853-1 FORM A
For tubes to DIN 11866
Series B



Nominal Size DN	l	S	Ordering Code
8	12.0	3.5	8-ODGS/*M.**
10	16.0	3.5	10-ODGS/*M.**
15	20.0	3.5	15-ODGS/*M.**
20	26.0	3.5	20-ODGS/*M.**
25	32.0	5.0	25-ODGS/*M.**
32	40.5	5.0	32-ODGS/*M.**
40	46.5	5.0	40-ODGS/*M.**
50	58.5	5.0	50-ODGS/*M.**
65	73.5	5.0	65-ODGS/*M.**
80	85.5	5.0	80-ODGS/*M.**
100	111.0	5.0	100-ODGS/*M.**



60

50

40

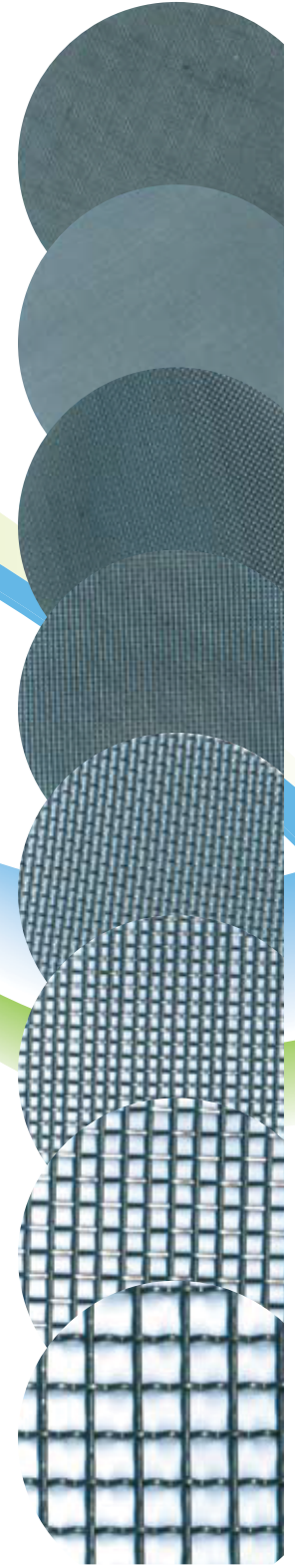
20

14

10

8

4



* The first digit refers to material guide, according to Table 1
** The last digit refers to surface quality, according to Table 2

Table1

Mesh (wrap)	Wire ϕ (mm)	Opening (mm)	Open Area (%)	Material
6	0.900	3.333	62	AISI 316
8	0.700	2.475	61	AISI 316
10	0.600	1.940	58	AISI 316
20	0.340	0.930	54	AISI 316
40	0.220	0.415	43	AISI 316
60	0.190	0.233	30	AISI 316
80	0.170	0.148	22	AISI 316
100	0.112	0.142	31	AISI 316

Table2

Material	FDA Certified	FDA Class VI Certified
Buna-N	BW	
EPDM Black	EP	EP.RX
EPDM White	EPW	EPW.RX
Silicone Platinum		SX.RX
Silicone Peroxide	SP	SP.RX
Viton Black	V	V.RX
Viton White	VW	VW.RX



Ordering Example

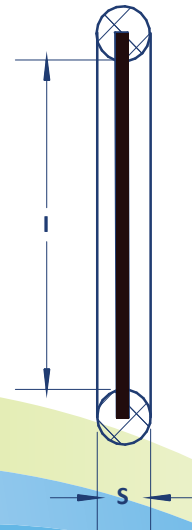
Description	Nominal Size	Mesh Size	Material	Ordering Code
Type ODG/S	10	#10	EPDM FDA	10-ODG/S10M.EP

SCREENS

DIN 11853-1 FORM A
For tubes to DIN 11866
Series C



Nominal Size DN	l	S	Ordering Code
1/2"	12	3.5	15-ODAS/*M.**
3/4"	18	3.5	20-ODAS/*M.**
1.0"	24	3.5	25-ODAS/*M.**
1½"	37	5.0	38-ODAS/*M.**
2.0"	50	5.0	51-ODAS/*M.**
2½"	62	5.0	63-ODAS/*M.**
3.0"	75	5.0	76-ODAS/*M.**
4.0"	100	5.0	100-ODAS/*M.**



60

50

40

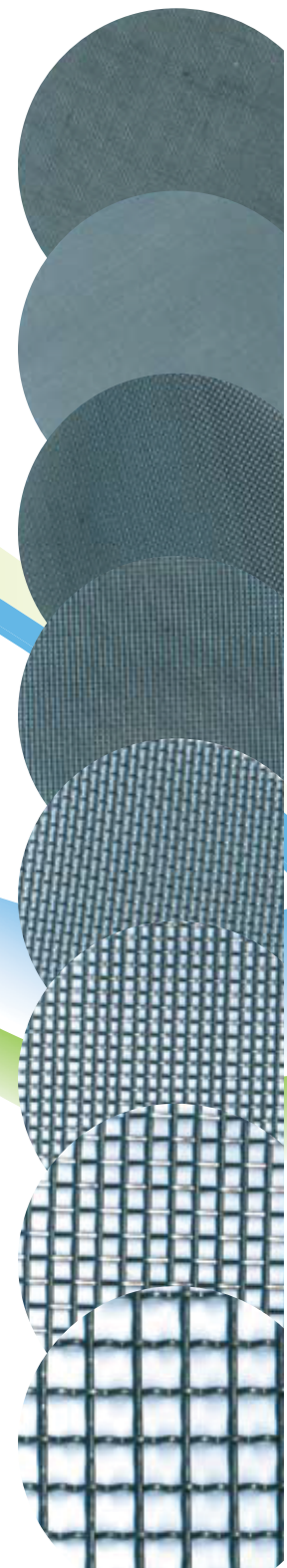
20

14

10

8

4



* The first digit referse to material guide, according to Table 1
** The last digit referse to surface quality, according to Table 2

Table1

Mesh (wrap)	Wire ϕ (mm)	Opening (mm)	Open Area (%)	Material
6	0.900	3.333	62	AISI 316
8	0.700	2.475	61	AISI 316
10	0.600	1.940	58	AISI 316
20	0.340	0.930	54	AISI 316
40	0.220	0.415	43	AISI 316
60	0.190	0.233	30	AISI 316
80	0.170	0.148	22	AISI 316
100	0.112	0.142	31	AISI 316

Table2

Material	FDA Certified	FDA Class VI Certified
Buna-N	BW	
EPDM Black	EP	EP.RX
EPDM White	EPW	EPW.RX
Silicone Platinum		SX.RX
Silicone Peroxide	SP	SP.RX
Viton Black	V	V.RX
Viton White	VW	VW.RX

Ordering Example

Description	Nominal Size	Mesh Size	Material	Ordering Code
Type ODA/S	10	#10	EPDM FDA	10-ODA/S10M.EP

